

# Henley▲

## Carmelle 30

**\$849,900\***

**Fixed Price**

31 sq

House size

292.8 sqm



**Greenvale Garden Estate Greenvale**  
**Lot 158 Greenvale Gardens Boulevard (512m<sup>2</sup>)**

### This home comes with

Stunning façade with timber windows and feature front entry door

Gourmet kitchen with 20mm Caesarstone® island benchtop, tiled splashback, 900mm upright cooker with oven, microwave and dishwasher

All floor coverings including timber look flooring throughout, carpet to all Bedrooms, Study, Theatre and Leisure, floor tiles to all wet areas

Resort style Master Suite with his and her dressing rooms, Caesarstone® benchtop, double vanities and shower to Ensuite

Undercover rear Alfresco with timber bi-fold doors, timber lined ceiling, timber decking and BBQ

Inclusive of all furniture and fittings currently on display

Ducted heating and refrigerated cooling

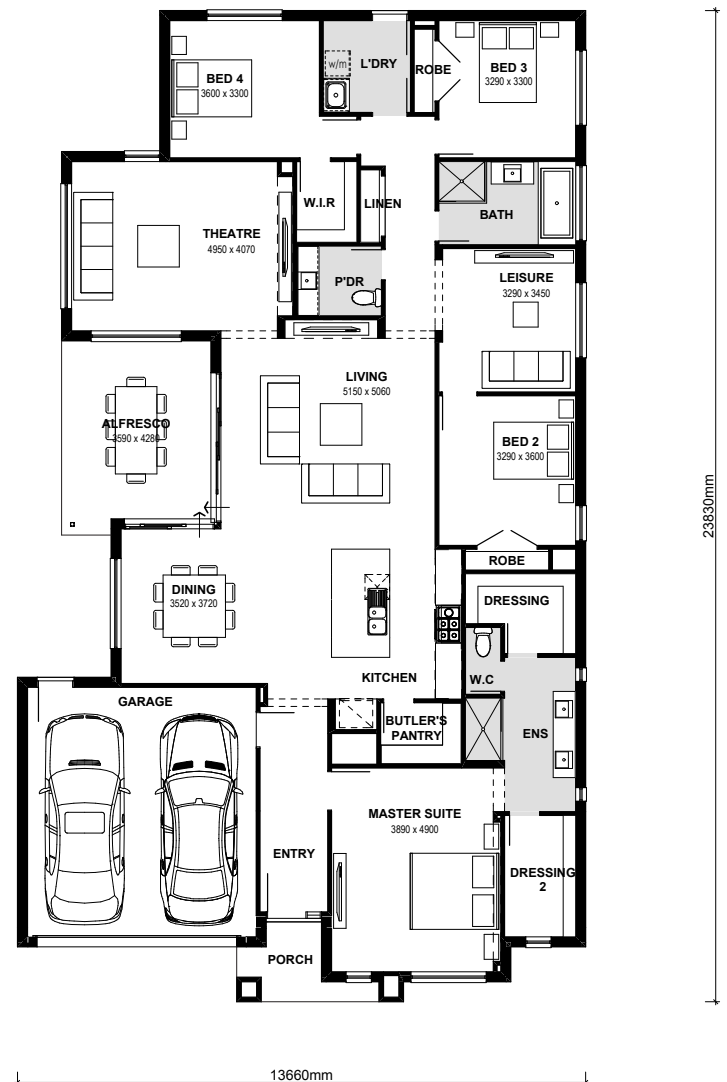
Window coverings, security alarm system & NBN access

Plenty of storage with Butler's Pantry, multiple linen cupboards and robes to all secondary bedrooms

Multiple living areas including Dining, Living and Theatre

Front and rear landscaping

Internal access from garage



**Contact:** Jason York 0413 202 035  
**henley.com.au**

\*Note: Price effective from 13.10.2017. Photography and illustrations in this flyer should be used as a guide only. Marketing plans are representative only. Plan is based on standard floorplan. Customers should inspect the property to establish extent of landscaping installed and refer to 'goods included', 'goods not included' and 'works to be completed prior to settlement' as listed in the Contract of Sale. This pricing only applies to the Henley ex-display home for sale at Greenvale Gardens Estate, Greenvale VIC. Henley reserves the right to change prices without notice.