

# Henley Reserve

## Amalfi 33

**\$899,900\*** Under Offer

32 sq House size

305.8 sqm



Greenvale Gardens Estate Greenvale  
Lot 156 Greenvale Gardens Boulevard (518 m<sup>2</sup>)



### This home comes with

Stunning façade with feature tiles piers, timber windows and feature front entry door & 3200mm feature entry ceiling

Gourmet kitchen with 40mm Caesarstone® island benchtop, feature tiled splashback, double built in wall ovens, 900mm cooktop with 5 burners, built-in coffee machine, microwave and dishwasher

All floor coverings including timber look flooring throughout, carpet to all Bedrooms, Theatre and Leisure, floor tiles to all wet areas

Large Master Suite with large walk-in-robe fitout, Caesarstone® benchtop, double vanities, shower and freestanding bath to Ensuite

Undercover side Alfresco with timber bi-fold doors, timber lined ceiling, timber decking with feature stackstone and built in gas fireplace.

Inclusive of all furniture and fittings currently on display

Ducted heating and add on refrigerated cooling

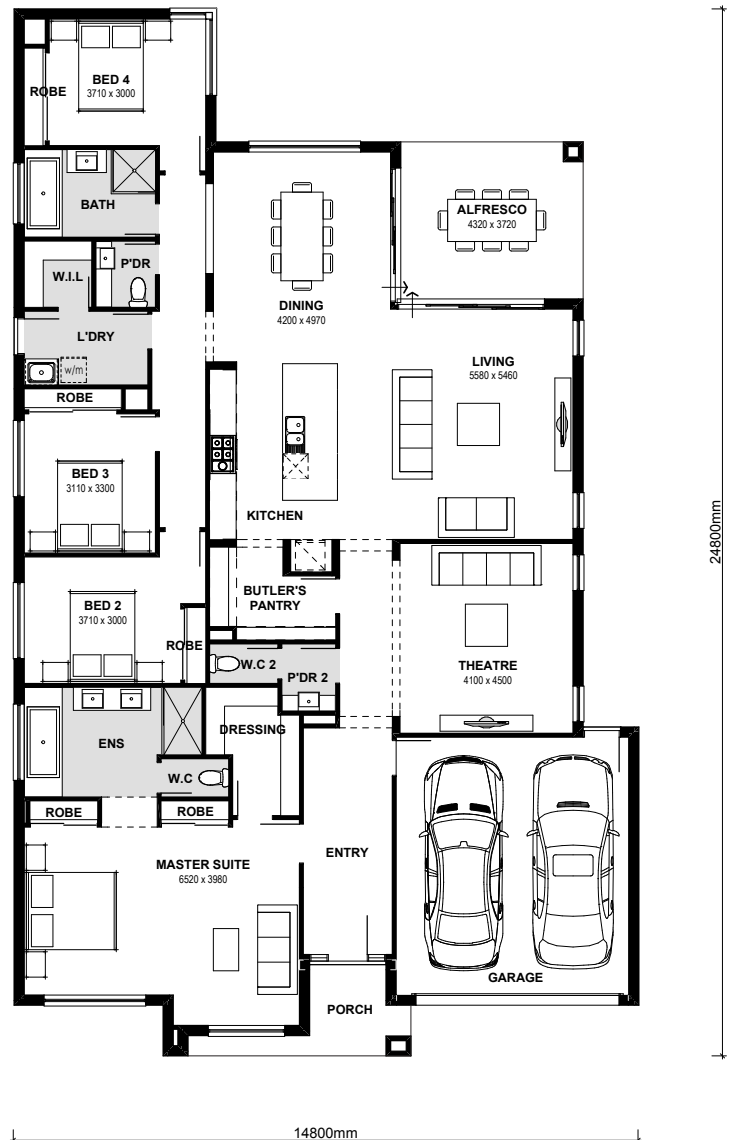
Window coverings, security alarm system & NBN access

Plenty of storage with Butler's Pantry, multiple linen cupboards and robes to all secondary bedrooms

Multiple living areas including Dining, Living and Theatre

Front and rear landscaping

Internal access from garage



Contact: Jason York 0413 202 035  
henley.com.au

\*Note: Price effective from 13.10.2017. Photography and illustrations in this flyer should be used as a guide only. Marketing plans are representative only. Plan is based on standard floorplan. Customers should inspect the property to establish extent of landscaping installed and refer to 'goods included', 'goods not included' and 'works to be completed prior to settlement' as listed in the Contract of Sale. This pricing only applies to the Henley ex-display home for sale at Greenvale Gardens Estate, Greenvale VIC. Henley reserves the right to change prices without notice.