

# Fixed Price \$732,486<sup>^</sup>

## Bianca 206-D22

Lot 933 Todra Crescent | Evergreen Estate, CLYDE

Lot size: 294 sqm | House size: 22.22 sq



4  
BEDS



2  
BATHS



2  
GARAGE

**HOUSE, LAND  
& LOAN PACKAGE**



Where façade shown, façade may represent offered façade but on different house type, and façade colours and materials that may not be available due to land estate guidelines. Price excludes tiles, stone and/or full tender to façade treatment, timber windows, landscaping, fencing, driveway, decking, planter box, decorative lights or any change required by Developer to façade. Internal images from our display homes may be shown where image of façade or actual design is not available, in which case some items pictured such as furniture, some fixture and fittings and structural options are not included in the fixed price and may not be available. Speak to your New Home Consultant for clarification.

### INCLUSIONS

Concrete roof tiles

Walk in pantry

20mm Zenith Surfaces by Stone Ambassador..

Carpet and timber look flooring~

2570mm high ceilings to single storeys and ground floor of double storeys

Double glazed windows+

900mm SMEG appliances

Aluminium awning windows throughout

Stiebel-Eltron hot water heat pump

# Henley

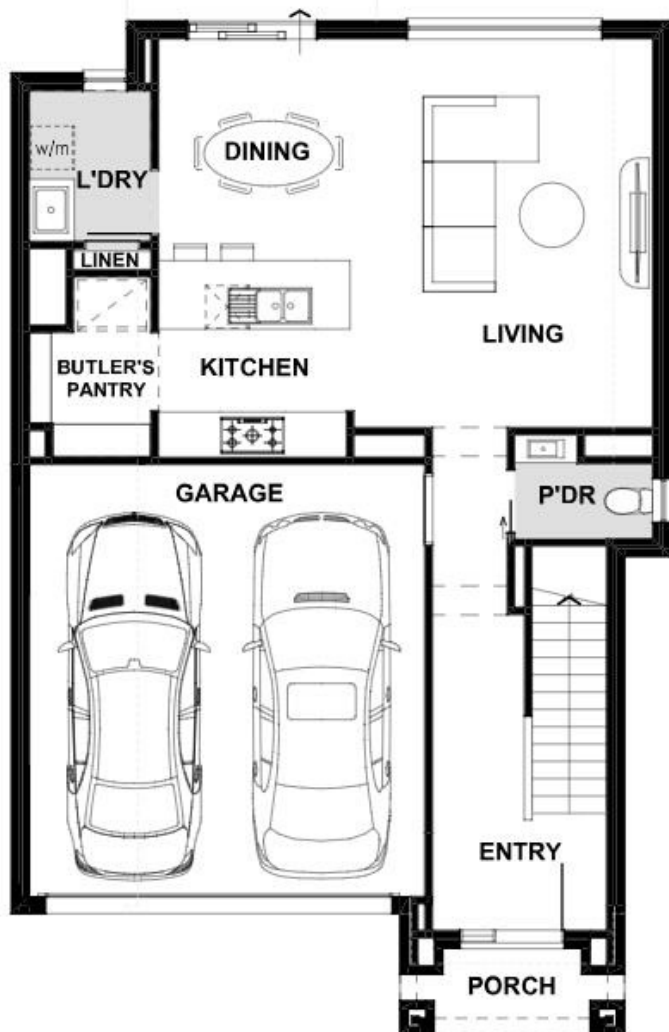
**FREE**  
**Flooring**  
Mainvue homes

T&Cs apply

Berwick - Minta  
Ph: 8306 6070 | [henley.com.au](http://henley.com.au)

# Bianca 206-D22 (22.22sq)

4 BEDS 2 BATHS 2 GARAGE



Berwick - Minta  
Ph: 8306 6070 | [henley.com.au](http://henley.com.au)



\*\*Based on land price provided by Developer as of January 2025. Henley does not have authority to negotiate land sale. Land is sold separately by Developer. All land enquiries to be made direct to Developer. Home price based on a standard home, standard inclusions, Henley's preferred siting and preferred building surveyor. Home price does not include additional costs for delay in land titles, or any allowance for bushfire requirements. -Flooring is Category 1 Carpet, and Category 1A Nordic Timber Laminate; +Double glazed windows excludes all doors, sidelights, butt jointed corner windows and picture windows to living areas. Allowance for Estate Guidelines# is based on items that can be identified in the Estate Guidelines at the time of fixing price and does not include discretionary items by Developer. House dimensions are for base floorplan and do not take into consideration any structural options chosen. Talk to your New Home Consultant to find out what upgrade amount was included for this package as they differ per house type. Images show quartz surface benchtops which are no longer offered due to a Government ban on engineered stone containing crystalline silica. Please speak to your New Home Consultant for options available at the time you pay a deposit and for a full list of standard inclusions. Please refer to master drawings for accurate features, floorplans and dimensions. All plans are copyright, no part may be used, reproduced or copied by any means or in any form without the prior permission of Henley Arch Pty Ltd. Henley Arch Pty Ltd Reg No: CDB-U 49972

SD571580