

# Fixed Price \$1,067,073<sup>^</sup>

## Malia 312-D34

Lot 730 Colson Way | Alira Estate, BERWICK  
Lot size: 400 sqm | House size: 33.50 sq



**HOUSE, LAND  
& LOAN PACKAGE**



Where facade shown, facade may represent offered materials for different house types and facade materials and materials may not be available. Internal images from our display homes may be shown where image of facade or actual design is not available, in which case some items pictured such as furniture, some fixture and fittings and structural options are not included in the fixed price and may not be available. Speak to your New Home Consultant for clarification.

### INCLUSIONS

- |   |  |
|---|--|
| Concrete roof tiles   | Walk in Pantry                         |
| 20mm Zenith Surfaces by Stone Ambassador. Crystalline Silica-Free.        | Carpet and Timber look flooring~       |
| 2570mm high ceilings to single storeys and ground floor of double storeys | Double glazed windows+                 |
| 900mm SMEG appliances   | Estate guideline requirements included |
| Stiebel-Eltron Hot Water Heat Pump  |  |

**BLACK FRIDAY  
GIVEAWAY**

- INCLUDED**
- FREE Flooring**  
Mainvue homes
  - FREE sonnenBatterie Evo**  
Reserve homes

MUST END 1 December 2024

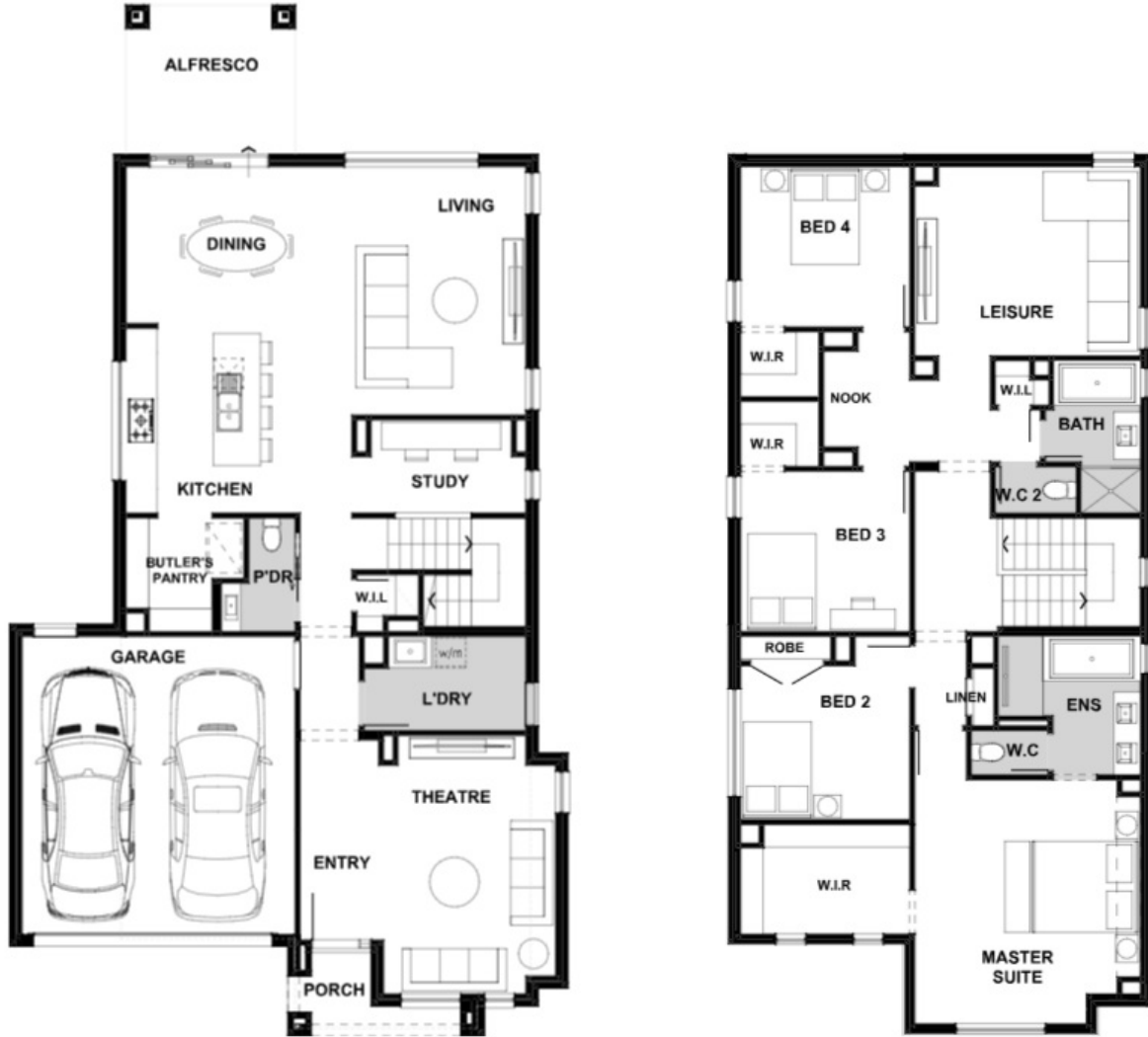
T&C's apply



Berwick Waters Estate  
Ph: 8306 6070 | henley.com.au

# Malia 312-D34 (33.50sq)

4 BEDS 2 BATHS 2 GARAGE



Berwick Waters Estate  
Ph: 8306 6070 | [henley.com.au](http://henley.com.au)

# Henley

^\*Based on land price provided by Developer as of August 2024. Henley does not have authority to negotiate land sale. Land is sold separately by Developer. All land enquiries to be made direct to Developer. Home price based on a standard home, standard inclusions, Henley's preferred siting and preferred building surveyor. Home price does not include additional costs for delay in land titles, or any allowance for bushfire requirements. -Flooring is Category 1 Carpet, and Category 1A Nordic Timber Laminate. +Double glazed windows excludes all doors, sidelights, butt jointed corner windows and picture windows to living areas. Allowance for Estate Guidelines# is based on items that can be identified in the Estate Guidelines at the time of fixing price and does not include discretionary items by Developer. House dimensions are for base floorplan and do not take into consideration any structural options chosen. Talk to your New Home Consultant to find out what upgrade amount was included for this package as they differ per house type. Images show quartz surface benchtops which are no longer offered due to a Government ban on engineered stone containing crystalline silica. Please speak to your New Home Consultant for options available at the time you pay a deposit and for a full list of standard inclusions. Please refer to master drawings for accurate features, floorplans and dimensions. All plans are copyright, no part may be used, reproduced or copied by any means or in any form without the prior permission of Henley Arch Pty Ltd. Henley Arch Pty Ltd Reg No: CDB-U 49972

SD564391